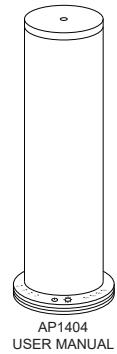


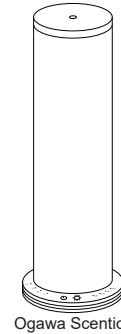
# ogawa scentio

Aroma Spa Diffuser

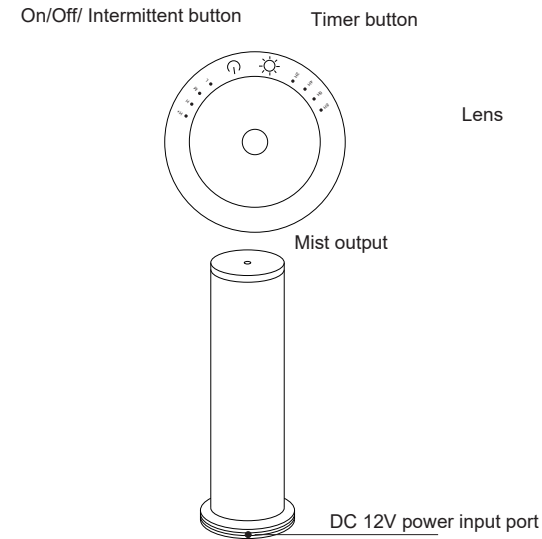


## Introduction

Thank you for purchase ogawa Scentio waterless nebulizer aroma diffuser. This diffuser adopted latest cold diffusion technology, no need to add water or heat, and it will atomize the oil into 1-3 Nano scale. Will not damage the oil particle, which is much easier to be absorbed by human body, and can efficiently help to improve your health, sleep and release stress.etc.

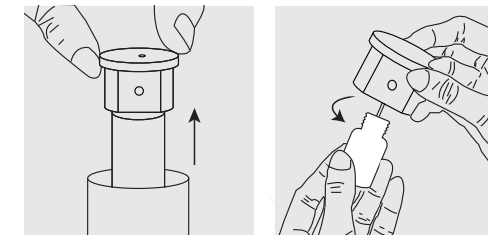


## Operate instructions



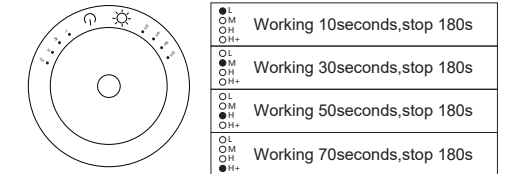
## Operation guide and cautions

1. Max capacity for essential oil bottle is 100ml.
2. To fill up the essential oil, please clamp the mist nozzle with your finger then apply slight force upward to pull out the mist nozzle and empty bottle from the product. Remove the bottle from mist nozzle by turning anti clockwise direction. Fill in essential oil into bottle then assemble back into mist nozzle with clockwise direction. Stop turning when the you feel the turning is tight.

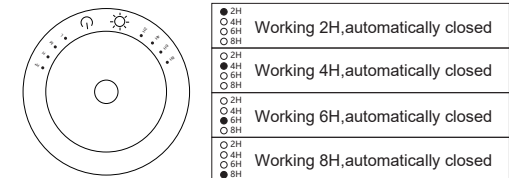


3. Use only Adaptor provided, 12V, 0.5A.

4. Press the on/off button (⏻), the light turn on, default is intermittent spray mode (the first light on) , press again will change to next mode, press and hold on/off (⏻) 1 second to off machine.



5. After turn on the diffuser, press timer function (⌚), timer light on, to switch other to timer mode.(default is 2H) press again the same button. Press and hold on/off (⏻) 1 second to off the diffuser.



Note : When timing light not truning on, product default as continues working, product won't turn off.

## Specification

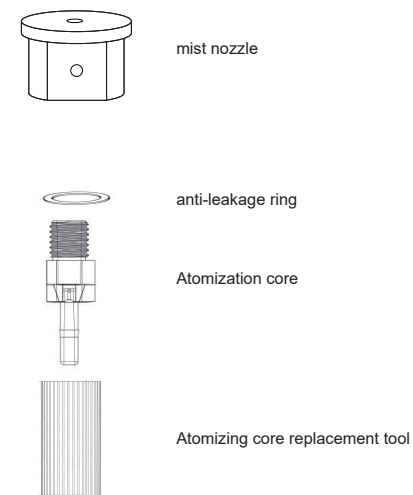
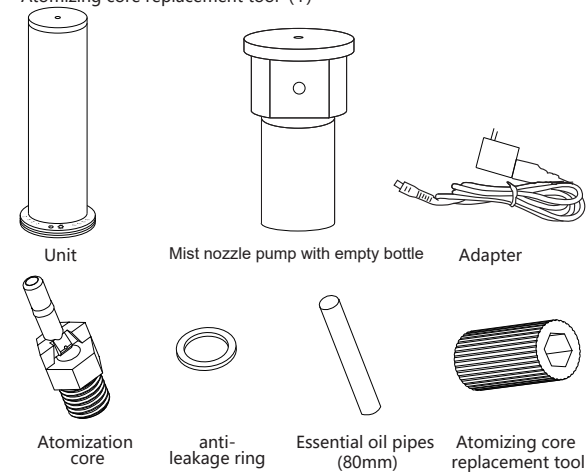
Product name : ogawa scentio Aroma Spa Diffuser  
 Model number : AP1404  
 Input Voltage : DC 12V, 0.5A  
 Power : 6W  
 Dimension : Ø110.6mm x 254mm  
 Weight : 780g ± 50g  
 Essential capacity : 100ml ( use only pure essential oil )

### FQA

1. How long does it take to fully charge the diffuser?  
 Answer: Without battery, use DC adapter for power supply
2. What type of essential oil does this diffuser use?  
 Answer: Use pure botanical essential oil or high volatile oil without impurities.
3. When diffusing, can't see the mist?  
 Answer: a. It is normal. This diffuser have the function to adjust the mist to save the essential oil.  
 b. Atomizing particle is only 1-3 Nano scale, which is difficult to see by eyes.

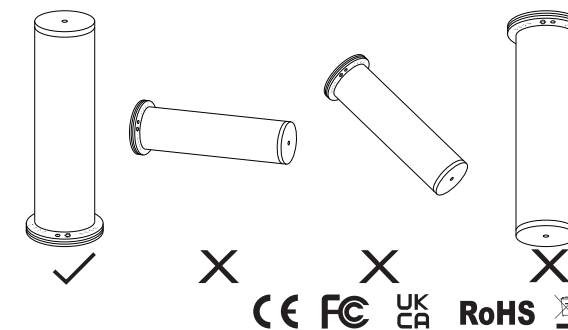
## Packaging accessories

Unit (1) Mist nozzle (1) Atomization core (2) Adapter (1)  
 anti-leakage ring (2) Essential oil pipes (80mm)  
 Atomizing core replacement tool (1)



## Warning

1. After the product is installed and used, the oil cannot be turned over or tilted to prevent essential oil leakage.
2. Don't modify or disassemble this product, which will caused damaged.
3. Please use at room temperature of 10 C ~50 C .
4. If you don't use it for long time. Please take out nozzle and diffuser separately to store.
5. Keep out of the children and pets.



## Contact Us:

HEALTHY WORLD LIFESTYLE SDN BHD 550497-K  
 No.22, Jalan Anggerik Mokara 31/47, Kota Kemuning, 40460 Shah Alam,  
 Selangor Darul Ehsan, Malaysia.  
 Tel: 1800-88-4688  
[www.ogawaworld.net](http://www.ogawaworld.net)